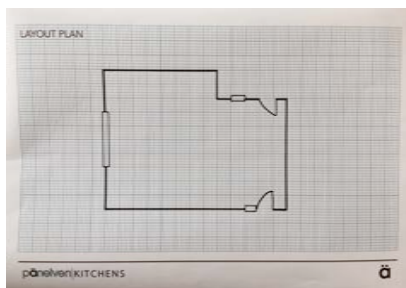


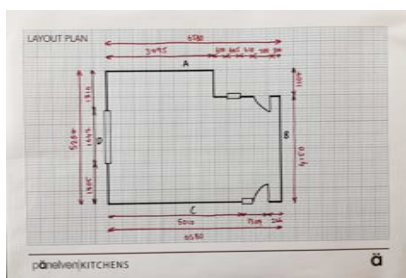
Measuring Guide

Follow These Simple Steps To Enable Us To Design Your New Kitchen

You will need: tape measure, pencil, and graph paper (which can be printed from this guide).

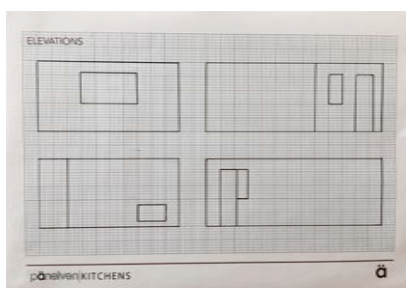


Step 1.
Draw an outline plan of your room, marking openings for windows and doors where appropriate.



Step 2.
Name/number the walls of your space. For each wall measure the following:

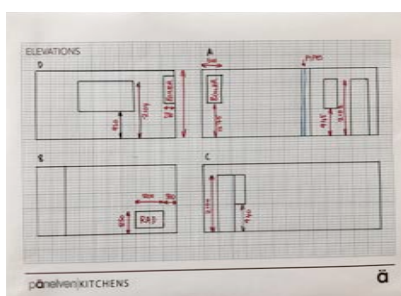
1. The full length of the wall
2. The distance between any openings (windows, doors etc.) and their position on the wall. Ensure measurements of doors and windows include any frame or architrave.



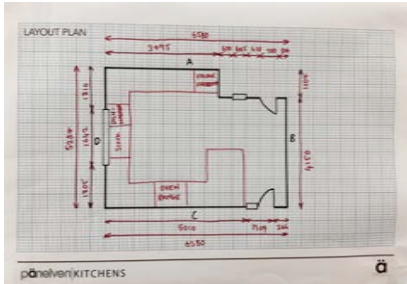
Step 3.
Draw elevations for each wall. For each elevation measure the following:

1. Floor to ceiling height.
2. The full height of openings (including any frame or architrave).
3. For windows the distance from the floor to the bottom of the window sill.
4. Mark on your plan the location and position of the following if appropriate:

- Ceilings or height restricted areas
- Steps
- Beams
- Switches
- Sockets
- Radiators
- Services (existing or proposed position):
 - Gas
 - Water
 - Waste



Measuring Guide



Step 4.

(Optional)

1. Mark out any layout ideas you would like to include.
2. To get your 3D render to look as real to life as possible you can include details of proposed or existing finishes i.e. oak floor, wall colour etc.

Step 5.

Simply photograph your drawings and email to kitchens@panelven.co.uk

LAYOUT PLAN

ELEVATIONS